

Uniform **POLISHED** **CONCRETE** Starts with the **CANVAS**

Proven techniques
to avoid problems.

By Denny Bartz, Pat Harrison,
and Bruce Suprenant

Want a stunning polished floor where everyone is amazed at the results? If so, you need to make sure the canvas—the installed concrete slab—is appropriate because polishing does not necessarily eliminate, or may actually accentuate, imperfections in the existing slab. To avoid revealing these imperfections when polishing, consider these proven techniques, based on our experience at over 100 polished concrete floor installations. The means and methods described here will assist contractors in satisfying project specifications and guarantees happy architects and owners.

MINIMIZE THESE CANVAS IMPERFECTIONS

Although there are many different imperfections in the concrete canvas that can show through after polishing, we want to share proven techniques to minimize or eliminate imperfections in four major categories:

- Differential aggregate exposure – **FIGURE 1.**
- Difference in surface finish density – **FIGURE 2.**

FIGURE 1 - Bump Cutting: Differential aggregate exposure due to bump cutting, scraping the paste off the high spots and depositing it in the low spots. When polishing, the aggregate in the high spots will be exposed first.

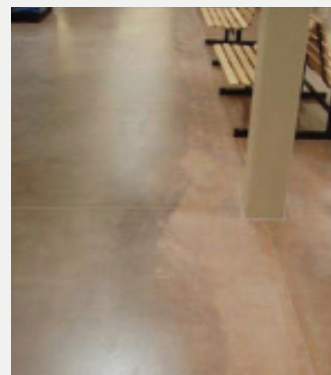
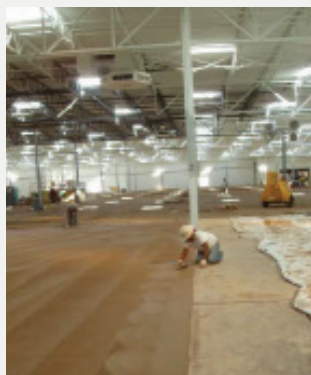
Photo Credit: SSI



FIGURE 2 - Minimize Hand Finishing: Difference in surface finish density results from hand versus machine finishing. Note the difference in the polished surface

along the edges where the worker was hand finishing versus the polished surface where the surface was machine finished.

Photo Credit: SSI



Philadelphia, PA
410 yards of concrete poured in 4 hours

Line Dragon



POUR CONCRETE UP TO **60% FASTER**
AND WITH **LESS LABOR**

- Remote controlled
- Increased job safety
- Increased efficiency
- Less labor
- Cost savings
- Increased capacity
- Small and large jobs
- Equipped with 4" or 5" boom



Keeps lines secured
and snag free

717-875-1153

LINEDRAGON.COM • DRAGONEGG.NET

- Effect of saw cutting – **FIGURE 3.**
- Influence of curing – **FIGURE 4.**

Minimizing or eliminating imperfections in these four categories will result in a dramatic improvement in the final polished floor. And here is how.

DIFFERENTIAL AGGREGATE EXPOSURE

The overall aggregate size and the blend of coarse to fine particle content should be carefully

considered for concrete materials that will be polished after installation. If a smaller nominal maximum size aggregate and a higher sand content is desirable to achieve a more uniform fine aggregate exposure when polished, the designer should consider closer joint spacing to accommodate potential higher material shrinkage and minimize long-term joint widening.

Placing concrete in piles stacks the aggregate at these locations. Workers then use a come-along or power screed to move concrete from

the top of the pile to distribute across the subgrade. However, what is being distributed is not concrete with a uniform aggregate distribution. Thus, when the floor is polished, the result is differential aggregate exposure at the surface. Aggregate stacking most often occurs when placing concrete by buggy or by pump when the pump hose is left in one spot. To minimize aggregate stacking during concrete placement, it's preferable to place the concrete directly from the truck. If pumping is necessary, make sure the pump hose is not left in one spot during concrete discharge.

Uniform consolidation is important, as leaving a vibrator in one place too long separates the aggregate from the paste just enough so that these locations are visible during polishing. Make sure the vibrator handlers understand this will ultimately be architectural concrete and they need a uniform, consistent vibration plan. This should include vibrators of the same size and frequency, vibrator insertion spacing, and vibration time.

Bump cutting removes paste from high spots and deposits it in low spots. Thus when polishing over the high spots, aggregate at this location is exposed sooner than when polishing over the low spots that has more paste covering the aggregates. Minimize or eliminate bump cutting from the finishing process. Use pan floats to obtain the floor flatness needed for polishing.

Footprints push aggregate lower,

FIGURE 3 - Residue and Scratches Below Plate: The effect of saw cutting is shown on the polished surface when the saw cut residue is not removed by vacuum.

Photo Credit: SSI



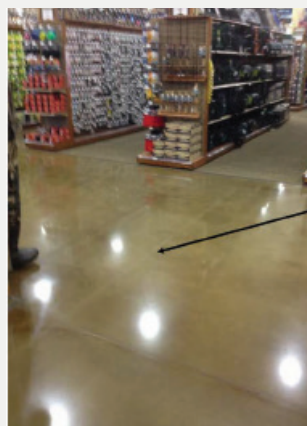
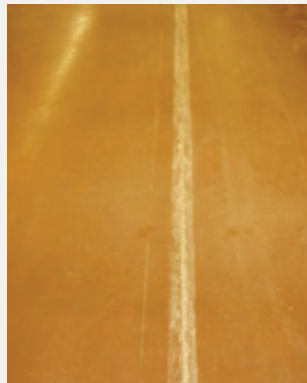
FIGURE 4: The influence of curing illustrated when using a curing cover where the wrinkles have not been removed. The wrinkle locations will show when the slab is polished.

Photo Credit: SSI



FIGURE 5 - Discoloration from Tape Lines: The impact of protection is clearly shown by the discoloration of the tape lines after the floor is polished. What everyone thought would provide excellent protection, still turned out to show through on polishing. Be very careful with even the smallest of details when providing protection.

Photo Credit: SSI



bringing more paste to the surface and this difference can be seen during polishing (**Figure 6**). Minimize walking on the slab at an early age where the footprint can cause this issue. When hand screeding, pulling either a straight edge or vibratory strike off, walking ahead of the screed will depress the aggregate, potentially leaving differential aggregate exposure when eventually polished. Therefore, it is preferable to use a strike-off method that does not require standing in plastic concrete.

Use a roller tamp to seed the coarse aggregate below the surface. Directly after the initial strike-off, roll a 36 inch minimum width, double roller tamp, prior to channel floating. At the slab perimeter, use of a jitterbug will provide uniform coarse aggregate embedment.

DIFFERENCE IN SURFACE FINISH DENSITY

Minimize hand finishing at pour edges, near walls and around columns and penetrations as these will polish differently than surfaces that are machine finished. At pour edges, use a beveled form edge with supporting stakes below the top form surface. Machine finish over the form edge as shown in **Figure 7**. Use a walk-behind edge finishing

machine, with rotating guard ring, if necessary to get close to concrete slabs placed adjacent to walls. Always try to ride-on machine finish as close as possible to columns, penetrations and construction joints.

Avoid a burnished finish as the polished surface is not uniform. Perform machine troweling with plastic (Teflon) blades which provide a more uniform surface finish than steel trowel blades.

FIGURE 6 - Footprints Seed Aggregate: Footprints push aggregate lower, bringing more paste to the surface and this difference can be seen during polishing.

Photo Credit: SSI



BackSaver

Patented Hammer Drill Attachment

Revolutionize the way you work!

SAVE YOUR BACK

and Get the Job Done!

\$449 EACH

VERSION 1.5

WE WON!

MIP

most innovative products at MIP OF CONCRETE

There isn't another concrete drilling attachment tool like this available! Our revolutionary, patented concrete hammer drill attachment may increase productivity while maintaining quality and improving safety management. With the durable BackSaver, your company can benefit by:

- Providing higher quality job results with more consistent level drilling
- Operating more cost effectively with increased productivity due to the application of more pressure and use of less energy
- Potentially lowering back injury and strain by keeping user stands while drilling
- Working in a safer environment, distancing user from harmful silica dust
- Increasing occupational hazard protection - attachment aids in absorbing harmful vibrations generated by the hammer drill

BackSaver attaches to the following drill models:

SDS Max Rotary Hammers:

- DeWalt Hammer Drill - 2"
- DeWalt Hammer Drill - 1-7/8"
- DeWalt Hammer Drill - 1-3/4"
- DeWalt Hammer Drill - 1-9/16"

Splined Rotary Hammers:

- DeWalt Hammer Drill - 1-3/4"
- DeWalt Hammer Drill - 1-9/16"

* Needs Additional Adapter

NEW AND IMPROVED DESIGN

Go to our website to get specific drill model numbers

Ask For Us At Your Local Dealer

www.hammerdrillattachment.com

PRODUCT QUESTIONS? CALL 618-797-6078

Finally always check the machines for mortar because if it falls off and gets finished in to the concrete they will leave scratches that will be visible when polished.

EFFECT OF SAW CUTTING

Form contraction joints with an early-entry power saw using a dry-cut blade. Use a vacuum (Figure 8) attached to the saw to remove saw cut residue. The early-entry saw minimizes out-of-joint cracking due to delayed sawing, but the residue must be removed, and allowed to accumulate below the skid plate, or it will discolor the concrete when cured. This picture-frame discoloration of the concrete panels typically cannot be removed from polishing. Adhering the loop fabric side of a Velcro fastener strip to the

FIGURE 7 - Finish Over Beveled Form Edge: Machine finish over the pour edges by using a beveled form edge with supporting stakes below the top form surface.

Photo Credit: SSI

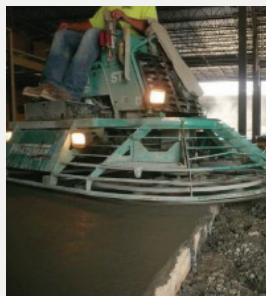


FIGURE 8 - Form contraction joints with an early-entry power saw using a dry-cut blade with a vacuum to remove saw cut residue, otherwise a stain from the residue will show when the concrete is polished.

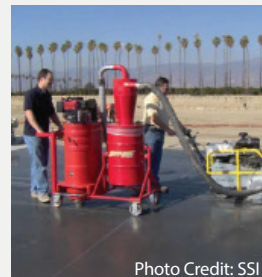


Photo Credit: SSI

bottom of the saw skid plate will also minimize scratching from any debris that is not removed from vacuuming.

INFLUENCE OF CURING

Use moisture-retaining cover cure blankets (poly-backed cellulosic covers absorb and retain the most moisture). Saturate the concrete surface for 30 minutes, then slowly unroll the blankets while continuing to saturate the absorbent side. Wrinkles must be eliminated in the cover with a broom or roller, or they will create surface discoloration that cannot be removed when polished. Adequate water below the blanket is necessary to remove all wrinkles and air voids. Salts will be brought to the surface through bleed channels during the curing period. Therefore, while removing the curing covers,

clean the surface. Scrub immediately, and as often as necessary, to remove all laitance and residue in a soluble state, prior hardening of materials that can discolor the slab surface.

PROTECTION WOES

The canvas is perfect—it's ready to be polished but wait, are those oil stains resulting from scissors lifts and forklifts that weren't diapered? And where did those scratches come from? While the concrete contractors might install a great canvas he can't control the work of other trades. The general contractor or construction manager must step up to protect the floor and enforce work limitations or restrictions for all trades. A slab protection plan should be developed and distributed for adherence by all sub-contractors and vendors working

around or near the exposed concrete slabs. The protection is important to ensure the canvas, once placed, remains suitable for polishing.

ESTABLISH MEANS AND METHODS AT THE PRE-CONSTRUCTION MEETING

The design team usually presents the important specification aspects of the particular work at the pre-construction meeting. Then they listen as the contractor presents his means and methods to accomplish the specification requirements. Present the means and methods discussed here to show the design team and the owner, you are ready for their important job. **CC**



Inspection Instruments, Inc.

Thermal Evaluation of Mass Pours

TEMP

info@inspectioninstruments.com tel: 216 831-6131
www.inspectioninstruments.net/TEMP

Innovation in measuring concrete core temperatures during curing

TEMP-S software

- Graphs extreme temperatures differences versus time.
- Calculates concrete maturity; helps estimate concrete strength.



GELMAXX®

Slurry Solutions & Excess Water Management

The EASIER Way to Handle Slurry

AQUAMAXX
SEPARATE SLURRY SOLIDS FROM WATER FOR REUSE

ECO-QUICKGEL
TURN SLURRY INTO A SAFE, DISPOSABLE SOLID IN ANY STANDARD TRASH CAN

Try It Before You Buy It! Request FREE Samples

GELMAXXUSA.COM | 855.322.3335

